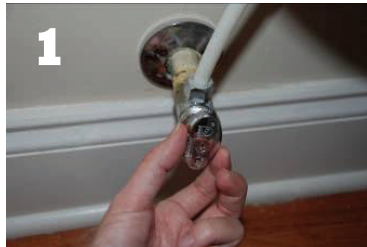


~ Instructions for installation ~



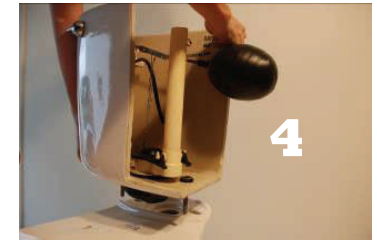
1 Turn off water supply valve
Flush and drain tank.



2 Detach water supply line from tank (**Place a towel under the supply line**).



3 Remove just the nuts that connect tank to base **Tip: leave bolts in place, it saves a step when reconnecting tank.**



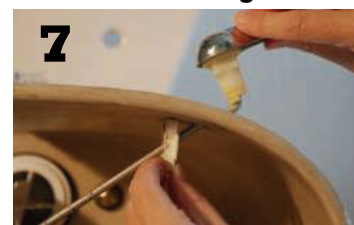
4 Remove tank from base.



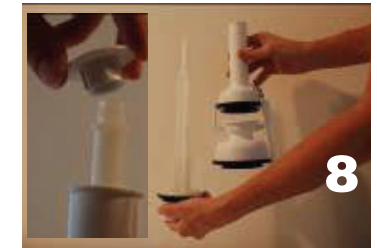
5 Remove tank seal at base (Replace if damaged).



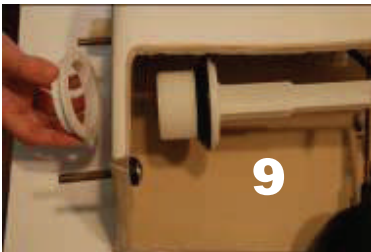
6 Unscrew large nut at base of toilet tank. Remove and discard old valve.



7 Remove old toilet lever (Unscrew lever retaining nut and remove old lever assembly).



8 Remove stem valve nut. Remove stem cap from SelectAFlush Valve and slide apart.



9 Remove stem valve nut and install new valve.



10 **Tip10: Push down on valve stem inside tank while reattaching nut. NUT MUST BE VERY TIGHT to ensure a proper seal**



11 Replace tank seal.



12 Reattach tank to base making sure to push down slightly on tank while tightening bolts for a level snug fit.

Tip12: Use caution not to over tighten these nuts as tank could crack, you can always tighten them some more if you find it leaks later. You can also use a carpenter's level for more accuracy.

SelectAFlush
Dual Flush Conversion Kit
Thank you for purchasing
SelectAFlush Dual Flush
Video instructions are available at
www.SelectAFlush.com



JOIN *The* **SelectAFlush**
H₂O
Challenge

To save 14 Billion Gallons of water
www.H2OChallenge.com



Slide the valve together.



Place entire component over the installed stem.



Install stem cap.



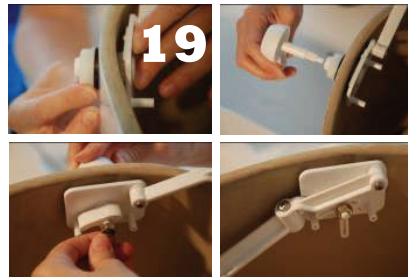
Disassemble new flush lever (Factory default is for left handed toilets see next step for right hand applications).



Transfer lever arm assembly from the left to the right plate by unscrewing lever arm assembly on the left plate and screwing it on to the right plate.



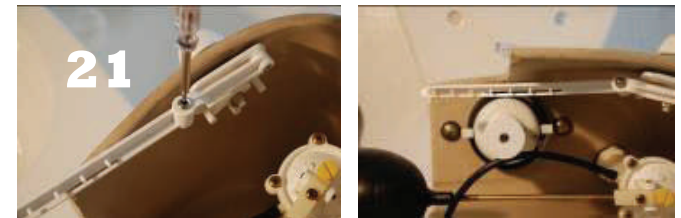
Place lever assembly through tank Re-attach seal and nut. Tighten nut while applying pressure to back plate, this will ensure a tight fit.



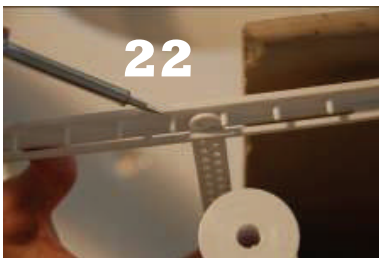
Attach handle, cam and nut. **Note: The cam always slopes down toward the inside of the tank, see bottom left photo**



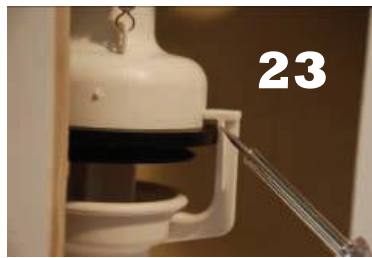
If desired: Add flush direction decal to the front of tank behind the handle. note: the "small" rinse flush is always toward the outside.



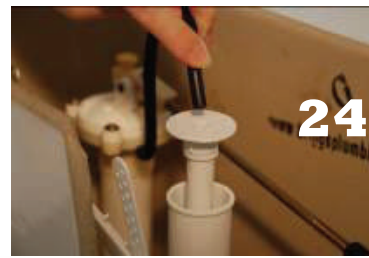
Loosen screw on lever extension to rotate arm in line up with chain strap and re-tighten screw.



Adjust strap tension to ensure chain is slightly slack. **Note: If the strap is too tight it will only allow a full flush and can cause the valve to leak.**



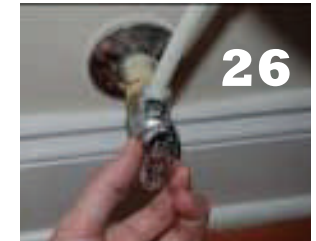
Rotate flush handle to the "rinse" position and hold - while holding, check that the upper float lifts until the edge of seal is 1/8" short of touching ears.



Reinstall water fill tube.



Reattach water supply line and turn on water supply. Check for leaks.



If needed, adjust water level (float valve) until 3 successful "rinse" flushes are obtained. Congratulations! You are now saving up to 7000 Gallons of water a day!



For FAQ, water conservation tips, video installation instructions, FREE screen savers, ring tones, Join the H2O Challenge! and much more ... please visit

www.SelectAFlush.com

Our Partner in Manufacturing
Made in Holland Michigan USA

www.LSMold.com